



info@calwestmashy.com



calwestmashy.com

888.841.3335

3V Tech

Glass lined reactors
Glass repairs
Filters & Dryers

Ascension Industries

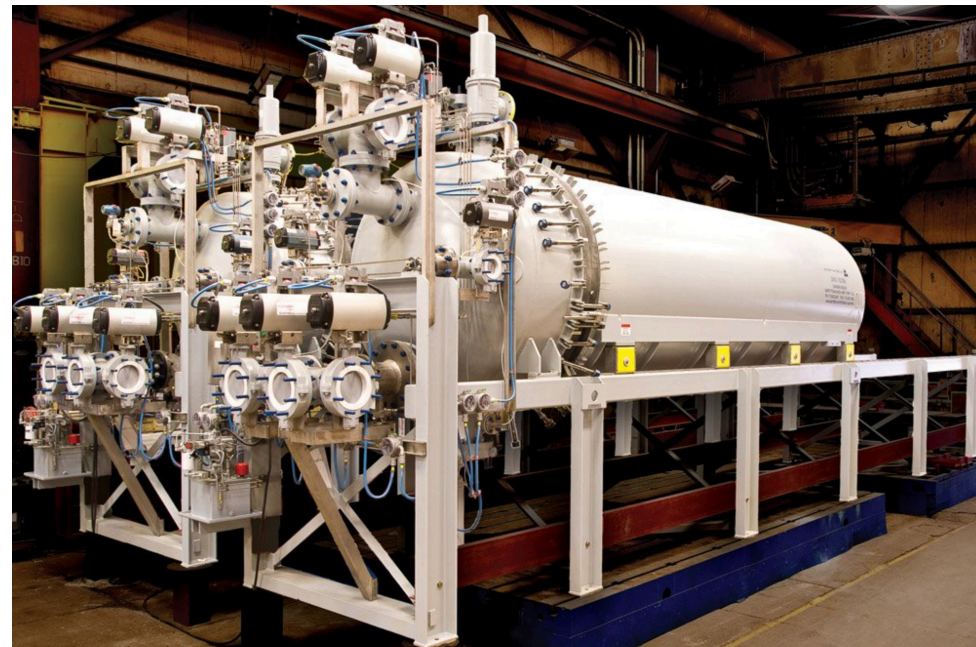
Precision Turnkey Manufacturing Services
Pressure Vessels

LINED & ALLOY REACTOR & REACTOR SYSTEMS

Ascension Industries occupies 140,000 square feet of manufacturing space with compatible overhead traveling cranes (up to 50-ton capacity) that make nothing too big, or too small, to be produced at this facility. From product concept review to materials selection, innovative product design at every stage, materials selection, project management, skilled manpower, instrumentation expertise / PLC programming & testing services, skid packaging & assembly, light & heavy manufacturing. Complete electrical, mechanical, pneumatic, hydraulic assembly & testing.

quick facts

Up to 13 feet in diameter
Up to 80 feet in length
ASME Vessels
U, R, NB & PED stamps
China code stamp
API 620 & 650 Fab



applications

- Amines
- Biodiesel
- Color-alkali
- Molten sulfur
- Metal hydroxides
- Sludge cakes
- Solvent removal
- Acids
- Bases
- Solvents
- Oils & Pigments
- Catalysts
- Brines & Resins
- Propellants/explosives
- Scrubber sludge
- Fermentation pre-filters
- Municipal water

industries

- Chemical
- Food & beverage
- Mining
- Waste water
- Metals
- Pulp & Paper
- Energy
- Toiletries
- Cosmetics
- Biofuels

qr codes



CWM Vessels

AI 2

AI 3

AI 4

AI 5

AI 6

Glasscoat's product portfolio covers the full range of chemical synthesis from reaction to distillation to separation and drying. The production of glass lined process equipment is Glasscoat's speciality having a 40 year history in producing process equipment for the chemical synthesis and the pharmaceutical industries. The cGMP design, clean room suitable and high containment equipment that has been a hallmark Glasscoat. Glasscoat's primary glass is G2208. It has a number of superior characteristics. In addition to its excellent corrosion resistance to acidic process environments, it is distinguished by higher thermal shock resistance and smoother surface finish than other glasses. Phi and Sigma glass is also offered.

quick facts

- Temp ranges from -120 to 300°C
- Cooling capacities up to 30kW
- Air or water cooled condensers
- Single stage compressor
- Rapid transition rates
- Cascade cooling



applications

- Active pharmaceutical ingredients
- API & HAPI
- Agrochemical
- Extractions
- Purification
- Convention drying
- Drying filtered cakes
- Alcohol
- Bulk chemicals
- Pharmaceuticals
- Foods
- Essences
- Fragrances
- Aromas
- Flavors
- Waste and sludge treatment
- Pyrolysis
- Thermal desorption
- Biofuels

qr codes



CWM Vessels



Glasscoat Video



Glass Options

industries

- Food
- Pharmaceutical
- Biotech
- Biofuel
- Chemical